



MANUAL

WELDAS PRODUCT:  
10-2806

This product is in compliance with the regulation (EU) 2016/425

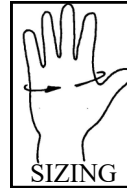
EN 388:2016/A1:2018

Glove type: working glove

Size: see imprint on glove

**Sizing according to EN 21420 : 2020**

Hand Size Index	9
Weldas Size Label	L
Measurement in mm	229



**Health information:**

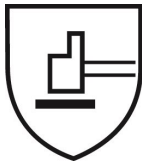
The pH, Chromium (VI) and PCP levels of all materials have been tested and meet CE health standards.  
Coloring: coloring is done by using natural materials

**Instruction for use:**

This glove is intended to be used where mechanical risks apply. This glove should not be used when there is a risk of entanglement by moving parts of machines.  
The offered protection only relates to the palm area of the glove.  
The service life depends on the degree of wear and use intensity in the respective application areas and is max. 36 months after manufacturing date. The date of manufacture is indicated on a label at the inside of the glove.  
This glove should not be worn when there is a risk of entanglement by moving parts of machines.  
This glove must be checked on its integrity before using it (for example check that the glove does not present holes, cracks, tears, colour change and discard any glove presenting such defects).  
Donning, doffing and adjusting this glove must be done very carefully to avoid any defects on the glove.

**The following explains the pictograms marked on the glove:**

**Mechanical risks: EN 388:2016 + A1 : 2018**



3244B

Digit	Test Resistance	Level 1	Level 2	Level 3	Level 4	Level 5
1st	Abrasion (# cycles)	100	500	2000	8000	—
2nd	Blade cut (index)	1,2	2,5	5,0	10,0	20,0
3rd	Tear (Newton)	10	25	50	75	—
4th	Puncture (Newton)	20	60	100	150	—
5th	TDM Cut resistance (N)	A	B	C	D	E
		2	5	10	15	22
						F
						30

**Remove:**

Once this product can't be used anymore, it is the responsibility of the user to remove this product in an environmental way. Disposal according to local regulations.

**Warrantee:**

This product is warranted against manufacturing defects.  
Because applications vary, it is the user's responsibility to identify the right product for each application. Each product contains a label with a batchnumber for traceability.

**Washing, drying and ironing:**

No washing, tumble drying and ironing is allowed.

**UV:**

Within this norm there is no test method indicated on UV radiation but, normally, this will give no problem with these materials used.

**Materials used:**

The innerhand is double split cow leather, the back is cotton, the lining is cotton and the cuff is made of canvas.  
This glove has two layers of material. Therefore the overall classification does not necessarily reflect the performance of the outermost layer.

**Improper use or improper storage can be of influence for the product performance.**

changing of the product performance over time during use or storage

Note 1 to entry: Ageing is caused by a combination of several factors, such as the following:

- cleaning, maintenance, or disinfecting process;
- exposure to visible and/or ultraviolet radiation;
- exposure to high or low temperatures or to changing temperatures;
- exposure to chemicals including humidity;

Each product contains a label with a unique code for traceability of the production process.

- exposure to biological agents such as bacteria, fungi, insects, or other pests;
- exposure to mechanical action such as abrasion, flexing, pressure, and strain;
- exposure to contaminants such as dirt, oil, splashes of molten metal, etc.;
- exposure to wear and tear.

**Storage:** Store dry and at temperatures over 5° Celcius. Do not stack higher than 5 cartons on 1 pallet

**Caution:** Gloves have been tested and certified at Eurofins Textile & Testing Spain, C/ German Bernácer 4, 03203 Elche (Alicante), Spain (EU no. 2865).

For more information on EN standards, testing methods, test reports, product certifications, and other products, please e-mail us at: [europa@weldas.eu](mailto:europa@weldas.eu) or visit our web site: [www.weldas.com](http://www.weldas.com)

Declaration of conformity, test report, certificate, manual: [www.weldas-ce.com](http://www.weldas-ce.com)

**Address information Weldas:**

Weldas Europe B.V. Blankenweg 18 4612 RC Bergen op Zoom The Netherlands e-mail: [europa@weldas.eu](mailto:europa@weldas.eu)